



PHILLIP JEFFRIES LTD. HANGING INSTRUCTIONS

HERRINGBONE WALLCOVERING

STOP: DO NOT CUT OR INSTALL UNTIL YOU HAVE READ THESE INSTRUCTIONS!

Thank you for choosing this fine handcrafted wallcovering. For the best results, we believe that a professional wallcovering installer should hang these wallcoverings.

DESCRIPTION:

Inspired by the bespoke tailoring found in London's Savile Row **HERRINGBONE** collection of wallcoverings are fabrics engineered for the walls. Classic chevron pattern **HERRINGBONE** brings a strong geometric statement to the walls. Expertly paper-backed, pre-trimmed and treated with a stain repellent finish in Japan for ease in installation, **HERRINGBONE** is available in a range of classic colorations.

PREPARATION:

Before you cut and hang, please be sure you have:

1. The correct wallcovering and the correct amount of wallcovering to finish the job.
2. Inspect the wallcovering carefully to ensure it is free of defects:

If no defect is evident before installation, the material should be inspected after three (3) strips are installed. If any defect is evident at this time (or at any point in the installation) no additional material should be hung until Phillip Jeffries Ltd. is notified. **NO CLAIMS WILL BE ALLOWED FOR MORE THAN (3) STRIPS ON THE WALL.** All claims must be made within 60 days of the invoice date. No labor claims will be allowed at any time.

BUILDING & MATERIAL CONDITIONS: The building must be weather-tight with HVAC settings (including pressure, temperature and relative humidity) the same as those of an occupied building for three days prior to, throughout installation and three days after installation. The walls must be structurally sound including elimination of sources of moisture accumulation into the wall or wall cavity. The wallcovering must be in a clean and dry condition and must be stored at normal occupied building temperature and humidity for at least three days prior to installation. All adhesives and primers must be new, good quality, commercial grade materials, which have not been contaminated.

IF YOU HAVE ANY QUESTIONS, PLEASE STOP AND CONTACT
PHILLIP JEFFRIES LTD. BEFORE PROCEEDING.

WALL PREPARATION:

1. The walls to be covered must be properly prepared to insure that the wallpaper will adhere to the wall surface. Even the strongest adhesive can only work when the wall surface is clean and properly prepared.
2. Phillip Jeffries recommends that installers use a hard, acrylic, pigmented, wall-protecting primer that is **SPECIFICALLY** made for **WALLCOVERING INSTALLATION** and **WALL PROTECTION**.

DO NOT utilize R-35 on its own as a primer as R-35 is a light-duty adhesion promoting sizer, not a wall-protecting, wallcovering primer.

3. Allow the primer to dry thoroughly before hanging.

311 Route 46 Fairfield, NJ 07004
Phone: 973-575-5414 Fax: 973-575-5123
Email: customerservice@phillipjeffries.com

SEE REVERSE SIDE



PHILLIP JEFFRIES LTD.

HANGING INSTRUCTIONS

HERRINGBONE WALLCOVERING

STOP: DO NOT CUT OR INSTALL UNTIL YOU HAVE READ THESE INSTRUCTIONS!

INSTALLATION

ADHESIVE

1. We recommend a premium clear, pre-mixed vinyl adhesive.
2. Apply the paste to the back of the paper, which will become flexible and easy to hang. Allow the paste to become tacky prior to hanging (exact time will vary based on temperature, humidity, etc.). Wallcovering can also be water/misted for pre-expansion, booked and then applied to a pasted wall.
3. Do not add excessive water to the paste as it may cause the backing paper to pull away from the front.
4. It is important to keep the face of the wallcovering free of adhesive & water to avoid staining or dull spots.

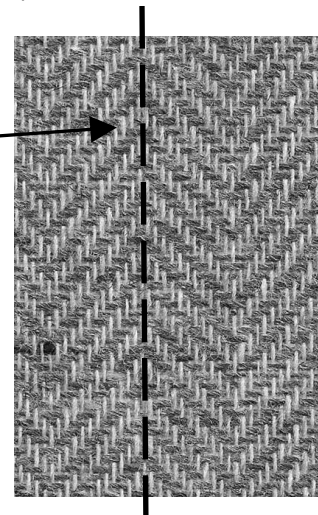
TRIMMING

1. The edges have been pre-trimmed at the factory. However, you may wish to make a precision cut on the table or double cutting on the wall to create as fine a seam as possible.
2. If double-cutting, we recommend that a polycarbonate strip be placed under the cut area to prevent wall / primer damage from the cutting blade.
3. Trim edges with a VERY sharp razor blade to avoid dragging the fibers. Change your blades often.
4. **DO NOT REVERSE THE STRIPS.** Reversing the strips will alter the pattern.
5. Trim edges with a VERY sharp razor blade. Change your blades often.

MATCH

1. To avoid disruption of pattern and create a perfect seam, trim / seam line should be in the middle of the 2 vertical rows of "chevron" pattern.
2. **DO NOT REVERSE THE STRIPS.** Reversing the strips will alter the pattern.

Trim / Seam at Dotted Line



TIPS

1. Use a soft brush or cloth when hanging, so that you do not damage the face of the wallcovering.
2. **DO NOT** allow paste or water to stain the front of the wallcovering.
3. Both paste and excessive water will change the color of the face of the paper.
4. Paste, trim and hang one strip at a time.
5. **DO NOT** reverse the strips. Reversing the strips will alter the pattern.
6. Consider using a light painters tape to cover the edges of previously installed strips, so that the paste coming out from the seams will not settle on the installed strips.
7. Gently smooth the wallcovering using a plastic smoother. Do not use a seam roller.
8. This wallcovering has been treated with a stain repellent finish. Treat stains as soon as possible with clean damp cloth. Wallcovering can be cleaned using a soft brush attachment of a vacuum.